



# Health Watch USA<sup>sm</sup> Newsletter

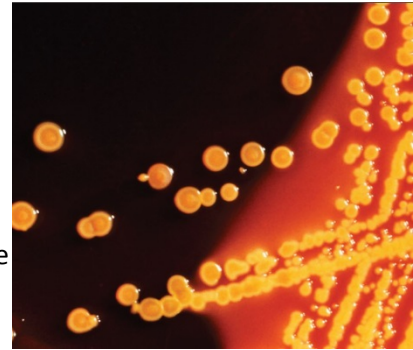
[www.healthwatchusa.org](http://www.healthwatchusa.org) March 26<sup>th</sup>, 2013

Member of the National Quality Forum and a designated "Community Leader" for Value-Driven Healthcare by the U.S. Dept. of Health and Human Services

## ***CRE a Growing Threat in Kentucky and the United States.***

Coverage by the Courier Journal finds many more cases than have been Reported to the Health Department. Health Watch USA<sup>sm</sup> is featured in the Article: "Kavanagh is among the doctors and activists who believe they should be (reported), and said: "I don't think there's a single person in Kentucky who wouldn't want to know whether there has been a case of CRE at their hospital."

<http://www.courier-journal.com/article/20130323/PRIME01/303240037/Deadly-bacteria-hitting-Louisville-hospitals-long-term-care-facilities>



---

## ***New Online Resources for Patients:***

### **Hospital State Complaint Inspections are Now Online**

The Centers for Medicare and Medicaid Services is currently gathering data on complaint inspections for acute care and critical access hospitals; and releasing it in electronic format. CMS acknowledges that the data released is incomplete. The data should not be used to compare hospitals. However, many of the reports can still be accessed. <http://www.hospitalinspections.org>

For Kentucky: <http://www.hospitalinspections.org/state/ky/>

### **ProPublica Updates Dollars for Doctors Data - Big Pharma Payments to Doctors**

Since 2009, 22 physicians have received more than \$500,000 in consulting and speaking fees. <http://www.medscape.com/viewarticle/780835>

Dollars for Docs <http://projects.propublica.org/docdollars/>

### **CMS Updates Readmission Penalties**

Hospital Readmission Penalties have been updated but only with slight changes.

<http://www.kaiserhealthnews.org/Stories/2013/March/14/revised-readmissions-statistics-hospitals-medicare.aspx>

Download Data File: <http://capsules.kaiserhealthnews.org/wp-content/uploads/2013/03/KHN-Readmissions-Penalty-With-March-2013-Update.csv>

---

### **New Publication from The National Academies Press: "U.S. Health in International Perspective: Shorter Lives, Poorer Health"**

"The United States spends much more money on health care than any other country. Yet Americans die sooner and experience more illness than residents in many other countries. While the length of life has improved in the United States, other countries have gained life years even faster, and our relative standing in the world has fallen over the past half century." [http://www.nap.edu/catalog.php?record\\_id=13497](http://www.nap.edu/catalog.php?record_id=13497)

---

### **A World Without Antibiotics**

"70 percent of ICU patients surveyed in India carry bacteria immune to multiple antibiotics." <http://indiatoday.intoday.in/story/antibiotics-medicine-bacteria-antibiotic-resistance-germs/1/257033.html>

### **CRE spreading through hospitals in the USA,**

The CDC says the U.S. must combat CRE infections "in a rapid, coordinated and consistent effort." <http://www.dallasnews.com/news/community-news/dallas/headlines/20130317-deadly-infection-spreading-through-hospitals-but-dallas-county-spared-so-far.ece>

---

### **Large Increase in Insurance Premiums are Predicted by Health Insurance Companies**

In order for them to increase premiums they have to be buying more expensive healthcare. <http://online.wsj.com/article/SB10001424127887324557804578374761054496682.html>

### **Survey of Nurses Worldwide Questions Hospital Safety**

Survey of 900 nurses worldwide (500 from the USA) found few nurses would call their hospital safe. 95% stated their hospital had patient safety programs, however, only 41% of the nurses described their hospital as safe.

<http://www.healthleadersmedia.com/page-1/NRS-290039/Patient-Safety-Programs-Ineffective-Most-Nurses-Say>

### **Nurse Understaffing Linked to High Infections in NICU**

"Substantial NICU nurse understaffing relative to national guidelines is widespread. Understaffing is associated with an increased risk for VLBW (Very Low Birth Weight) nosocomial infection."

<http://archpedi.jamanetwork.com/article.aspx?articleid=1669323>  
<http://www.medscape.com/viewarticle/781041>

### **Nursing Fatigue Linked to On-the-Job Errors**

"The majority of survey respondents either considered current staffing levels as inadequate (39 percent) or unsatisfactory (38 percent)."

"...nearly 65 percent of participants reported they had almost made an error at work because of fatigue and more than 27 percent acknowledged that they had actually made an error resulting from fatigue."

<http://www.pymnts.com/news/businesswire-feed/2013/march/20/kronos-survey-reveals-nurse-fatigue-is-pervasive-in-the-healthcare-industry-and-directly-linked-to-on-the-job-errors-20130320005124>

---

**29 States Receive a Failing Grade in Price Transparency. Kentucky received a "C".**

In California, prices for a knee replacement can range from \$15,000 to \$100,000.

<http://capsules.kaiserhealthnews.org/index.php/2013/03/29-states-get-f-for-price-transparency-laws/>  
<http://www.fiercehealthcare.com/story/29-states-fail-healthcare-price-transparency/2013-03-18>

**Solve the Infection Game's APP from the CDC**

"Scientists and gamers alike can now play disease detectives through Solve the Outbreak, a new iPad app from the Centers for Disease Control and Prevention (CDC). The app lets users play the role of an officer in the agency's Epidemic Intelligence Service (EIS) by navigating three fictional outbreaks based on actual events EIS officers have solved. Players get clues, review data, and make decisions to determine the cause of the outbreak."

<http://www.hhs.gov/digitalstrategy/mobile/solve-the-outbreak-ipad-app.html>

---

***Call For Papers -- Health Watch USA<sup>sm</sup>  
2013 Patient Safety Conference***

**Submit a 250 Word Abstract on Patient Safety**  
to <mailto:healthwatchusa@gmail.org>

Four papers will be selected for a 35 min presentation  
For more information go to: <http://www.healthconference.org/>

**Visit and "Like" HW USA's Face Book Page at:**  
<https://www.facebook.com/HealthWatchUsa>



**To Subscribe to this Newsletter Go To:**

<http://www.hwusa-newsletter.org/phplist/lists/?p=subscribe&id=1>



**This Newsletter is the Express Opinion of its Authors and Health  
Watch USA<sup>SM</sup>**